



More local high school graduates attend **Westchester Community College** than any other college or university. **CLASSES START 5/16, 5/23, 6/27, 8/1**

914-606-6735  
Westchester Community College  
State University of New York

# Northern Westchester

An online gathering place for news and conversation

The Journal News  
LoHud.com

- Home
- Headlines
- Fix it!
- Schools
- Share
- LoHud.com
- About

## Food Bank moving to Elmsford to more than double space

Posted by: Elizabeth Ganga – Posted in Elmsford , Millwood **on Jul 20, 2011**

The Food Bank for Westchester, which has been in Millwood since the early 1990s, will be moving to a 37,000 square-foot space in Elmsford that will more than double its capacity. The move will help the organization respond to the jumps in demand it has seen as the recession has dragged on. Read on for more:

0 tweets

tweet

“ THE FOOD BANK FOR WESTCHESTER PLANS MOVE TO LARGER ELMSFORD SPACE

WHAT:The Food Bank for Westchester, which has been based in Millwood for at least a decade, has signed a long-term lease on a 37,000 sq. ft. warehouse and office space in Elmsford. The new facility is nearly three times larger than the current headquarters and will enable the Food Bank to triple its food-distribution capacity.

WHERE:200 Clearbrook Road, Elmsford, NY 10523, just off Grasslands Road between Route 9A/North Saw Mill River Road and Knollwood Road.

WHEN: The Food Bank will move from its current Millwood location once reconstruction and installations are completed at the new facility. Installations include a 5,000 sq. ft. freezer, a 2,000 sq. ft. refrigerator, warehouse racking and a clean room for food repacking. Relocation of the warehouse operations and administration offices is expected to take place in late October or November 2011.

WHY: More than 200,000 people in Westchester County are hungry or at risk of hunger. Nearly half of them are seniors; approximately one-third of them are children. The Food Bank, which has been fighting hunger for 23 years, has seen the demand for emergency food continue to grow. Last year, there was a 30% increase in demand, and the Food Bank distributed seven million pounds of food – a million pounds more than the year before and two million pounds more than the year before that! As demand has escalated, the Food Bank’s Millwood warehouse has been bursting, causing logistic problems and the undesirable need to turn away food donations. The Food Bank has been searching for a larger space in Westchester for several years. The new Elmsford warehouse will allow the Food Bank to expand emergency hunger-relief services immediately and well into the future. Credit for forging the deal on the new Elmsford site goes to Food Bank Board President Rick Rakow, of Rakow Commercial Realty Group.

WHO:The Food Bank for Westchester, one of eight food banks in New York State, acquires, warehouses and distributes more than seven million pounds of food annually to over 200 local hunger-relief organizations, including food pantries, soup kitchens, shelters, day care and senior centers. Its mission is to lead, engage and educate Westchester County in creating a hunger-free environment. It is currently located at 358 Saw Mill River Road, Millwood, NY 10546. For information, visit [www.foodbankforwestchester.org](http://www.foodbankforwestchester.org) or call 914-923-1100.



f Like Confirm Tweet 3 Share

Tags: Food Bank for Westchester

Print This Post | Email This Post

Advertisements

### Search this blog

### Contact us:

- Send us a story tip
- List an item in our events calendar
- Share a photo

### Advertisement

### Follow us



Get blog updates via email:

### Recent Activity

You need to be logged into Facebook to see your friends' activity

Kat McKee shared IBMers help Kisco child care center | Northern Westchester. · about a week ago

Kat McKee shared Junior Leagues hold legislative breakfast | Northern Westchester. ·

Facebook social plugin

### Daily Photos



### Sports Photos





Leave a comment using your facebook account or leave a comment below

Name (required)

Mail (will not be published) (required)

Website

← Opinion Roundup: Caylee's Law

LoHud TV

More Videos

Place an ad

Call (914) 694-3581



News from your community

- Bedford
- Briarcliff Manor
- Lewisboro
- Mount Kisco
- Mount Pleasant
- New Castle
- North Castle
- North Salem
- Somers

Recent comments

- Horizon at Fleetwood: Congratulations, Christina! You have done so much for our community and really deserve this...
- sympathy poems: I like seeing websites that postulate the abatement of supplying a nature tip helpful resource in that...
- ronandoye94 @ day camp weatchester: Thats such a refreshing post with the picture included. Summer camps are the...
- Millie: I found just what I was needed, and it was enettrianing!
- john: Success in realizing the legalization of same-sex marriage. How ironic to salute some one for taking a position...

Advertisement

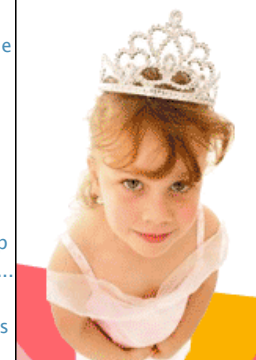
## Mom Dilemma #36:

Your daughter insists on wearing her princess costume to the grocery store. Allow it or not?

YES, at least she's dressed!

NO, I have some rules!

momslike.me.com  
where Local moms meet



## Other recent entries

- Opinion Roundup: Caylee's Law
- Opinion Roundup: PEF and CSEA contracts
- Renegades host 'Show Your Support Night' for Support Connection
- Opinion Roundup: Debt ceiling; affordable housing; fracking, troop reductions; French-American School
- Kisco seniors get nutrition funding

## Calendar

- Search calendar

## Recent Real Estate Sales

41 Pine Hill Drive Lewisboro, Price: \$927,000  
42 Larry's Lane Mount Pleasant, Price: \$995,000  
190 Croton Av New Castle, Price: \$708,250  
57 Park Ave Bedford, Price: \$430,000  
295 Manhattan Ave Mount Pleasant, Price: \$700,000  
Search real estate sales

## Recent Real Estate Foreclosures

9 Comanche Court Lewisboro, Price: \$74,398,737  
1 Byram Hill Road North Castle, Price: \$800,000  
18 Nethermont Avenue North Castle, Price: \$224,075  
53 Eastwoods Road Pound Ridge, Price: \$690,000  
19 Knapp Road Pound Ridge, Price: \$780,000  
Search foreclosures

## Monthly Archives

July 2011  
June 2011  
May 2011  
April 2011  
March 2011  
February 2011  
January 2011  
December 2010  
November 2010  
October 2010  
September 2010  
August 2010  
July 2010  
June 2010  
May 2010  
April 2010  
March 2010  
February 2010  
January 2010  
December 2009  
November 2009  
October 2009

## Links

LoHud Blogs  
Northern Westchester Express  
Review Press Express  
Rockland Express  
Sound Shore Express  
White Plains Express  
Yorktown/Cortlandt Express

## The Express

For more news and photos from your region, enjoy the EXPRESS section in The Journal News every Thursday and Sunday.

## Resources

- Arts Organizations
- Colleges
- Ethnic Organizations
- Food Pantries
- Golf courses
- Hospitals
- Libraries
- Museums
- Music venues
- Nonprofit associations
- Parks
- Restaurants
- Service Organizations
- School closings
- Schools
- Worship
- VFW's

Copyright 2011 | Use of this site signifies your agreement to the [Terms of Service and Privacy Policy](#), updated September 2010.